

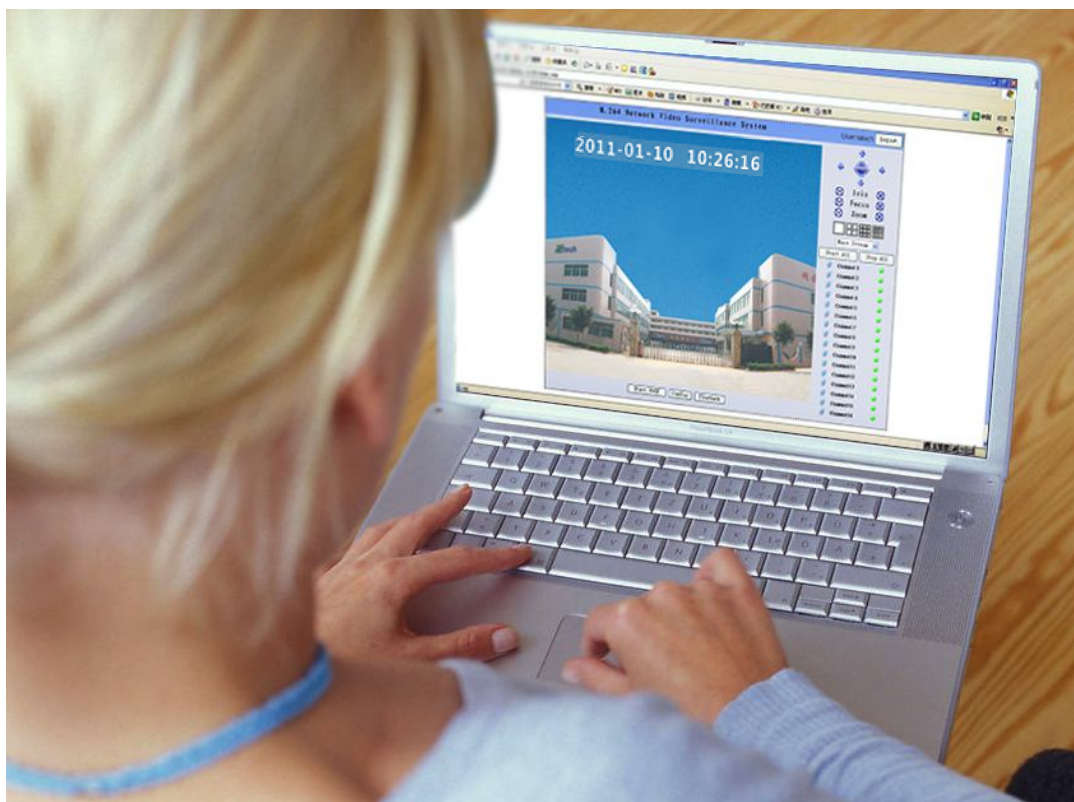


ISO9001/ISO14001/STMC/CE Certified, RoHS Compliant, REACH Compliant, MSDS Available

**RETECH TECHNOLOGY INTERNATIONAL LIMITED**

---

## Network Video Surveillance System



◆ Real time

◆ 24 – hour

◆ On line

◆ Long Distance



ISO9001/ISO14001/STMC/CE Certified, RoHS Compliant, REACH Compliant, MSDS Available

## RETECH TECHNOLOGY INTERNATIONAL LIMITED

---

### The function of NVS System

- 1<sup>st</sup>. To audit the factory manufacturing situation real time at your office, just like watching live program on TV.
- 2<sup>nd</sup> To check the processing of your order from raw material to finished cartridge and do pre-shipment inspection by yourselves on front of your computer.
- 3<sup>rd</sup>. To pick up samples randomly from our producing line long distance to inspect & control quality by yourselves.
- 4<sup>th</sup>.To check the real performance in our testing center of returned defective samples from you when complain.
- 5<sup>th</sup>.To confirm your customized private box design and sample
- 6<sup>th</sup>.. To inspect whole process of charging container and make sure your paid goods enter container definitely.

*Seemingly far away, actually close at hand.*

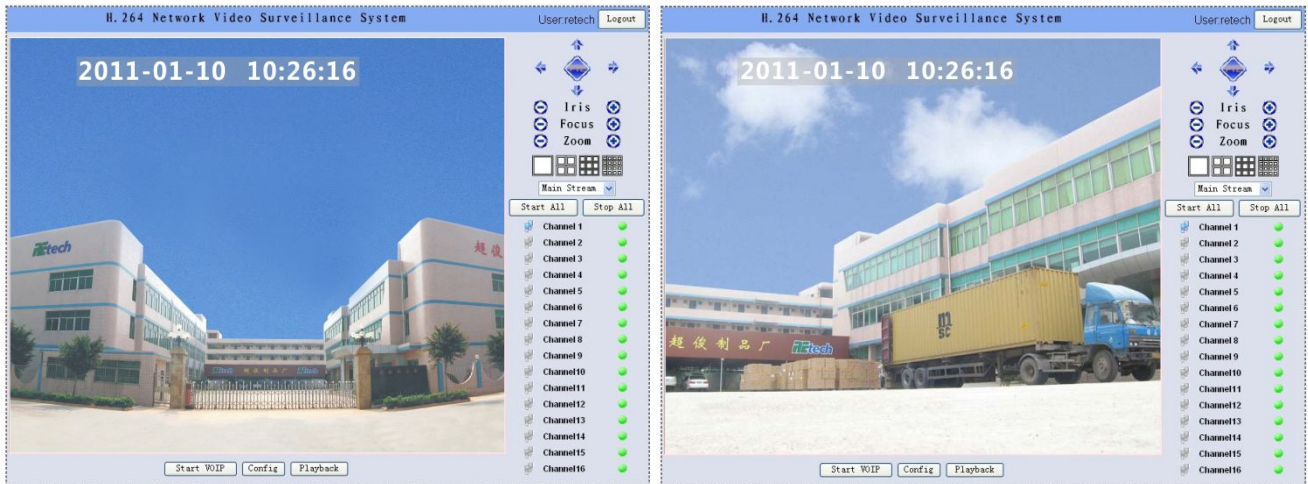


ISO9001/ISO14001/STMC/CE Certified, RoHS Compliant, REACH Compliant, MSDS Available

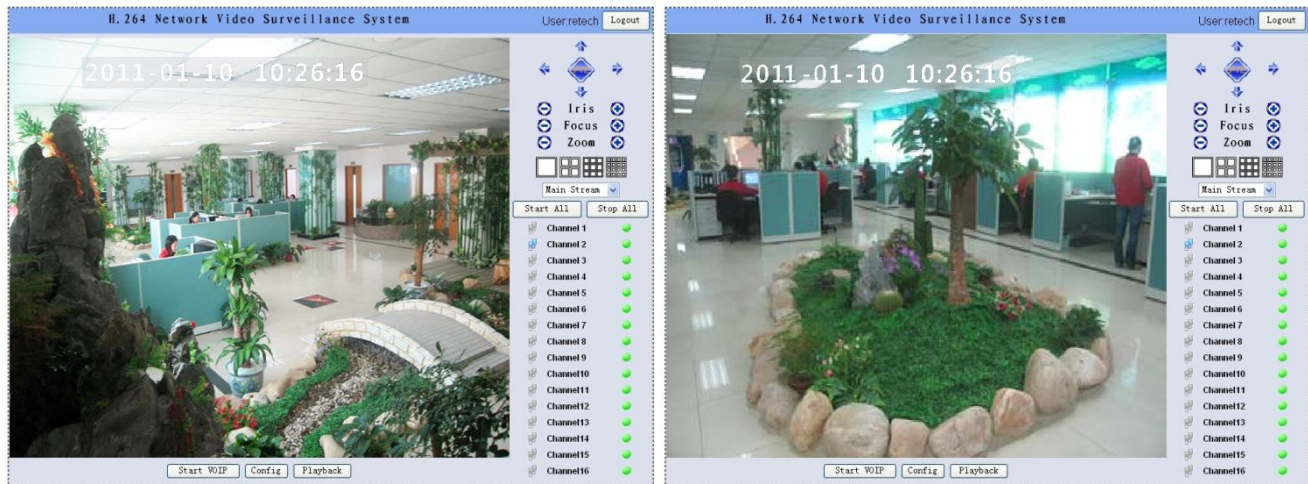
# RETECH TECHNOLOGY INTERNATIONAL LIMITED

## Different Channels

### Channel 01: Overview



### Channel 02: Office





ISO9001/ISO14001/STMC/CE Certified, RoHS Compliant, REACH Compliant, MSDS Available

# RETECH TECHNOLOGY INTERNATIONAL LIMITED

## Channel 03: QC Depart. & Testing Center



## Channel 04: Workshop





ISO9001/ISO14001/STMC/CE Certified, RoHS Compliant, REACH Compliant, MSDS Available

# RETECH TECHNOLOGY INTERNATIONAL LIMITED

## Channel 05: Workshop



## Channel 06: Workshop





ISO9001/ISO14001/STMC/CE Certified, RoHS Compliant, REACH Compliant, MSDS Available

# RETECH TECHNOLOGY INTERNATIONAL LIMITED

## Channel 07: Workshop



## Channel 08: Workshop



*More Channels for Our New Facility Coming Soon!*



ISO9001/ISO14001/STMC/CE Certified, RoHS Compliant, REACH Compliant, MSDS Available

# RETECH TECHNOLOGY INTERNATIONAL LIMITED

## Steps to Access and Operation Instruction

### Steps to Access step 1-7

1st step: Connect this website

3rd step: Choose "English"

4th step: Input user name "retech"

5th step: Input password (Send email to message@retech.com.hk with your company background to collect it)

6th step: Choose "Lan" or "Wan"

7th step: Click "ok"

2nd step: Download and Install plugin here.

### step 8-9

8th: Click here for full screen view

9th: Click channel one by one for detail view (currently channel 1-8 available)

### Operation Instruction

Use PTZ to change camera direction and locate anything you want to check

Use Zoom + to get clear picture

Over view  
Office  
QC Department  
Workshop

You do not have access to operate

NO need install DVRPlayer

## How to get Login password

You May send us email with your company background and enquiry to [message@retech.com.hk](mailto:message@retech.com.hk), Our sales manager who in charge of your territory will feedback you immediately by Login password and more information.



*Please don't hesitate to contact us!*